



INDOFINE Chemical Company, Inc.

121 Stryker Lane, Bldg. 30, Suite 1 • Hillsborough, NJ 08844 • U.S.A.

Phone: (908) 359-6778 • FAX: (908) 359-1179

website: www.indofinechemical.com

e-mail: chemical@indofinechemical.com

CERTIFICATE OF ANALYSIS

Catalog Number: 06-427

ProductM Name: **CORILAGIN**

CAS Number: [23094-69-1]

Lot Number: 1510691

Chemical Formula: $C_{27}H_{22}O_{18}$

Molecular Weight: 634.45

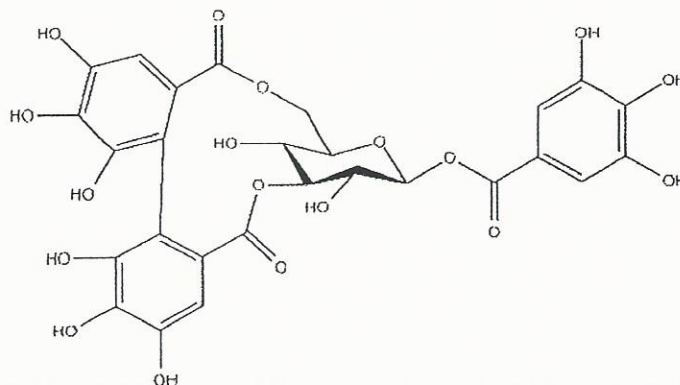
Botanical Source: Phyllanthus urinaria

Appearance: Off-white powder

Loss on Drying: 1.3%

Storage: Store in a cool, dry place. Protect from light.

Purity(HPLC): 98.53%





INDOFINE Chemical Company, Inc.

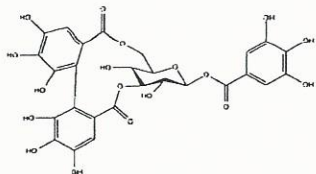
121 Stryker Lane, Bldg. 30, Suite 1 • Hillsborough, NJ 08844 • U.S.A.

Phone: (908) 359-6778 • FAX: (908) 359-1179

website: www.indofinechemical.com

e-mail: chemical@indofinechemical.com

HPLC ANALYSIS

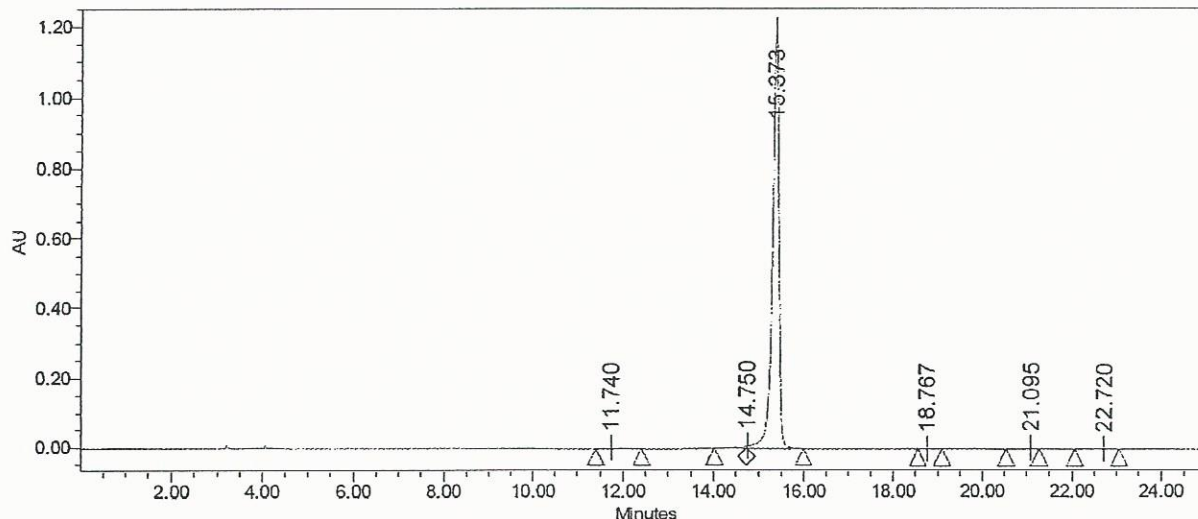


Catalog No.: 06-427
Product Name: Corilagin
Lot No.: 1510691

SAMPLE INFORMATION

Sample Name:	Corilagin	Sample Set Name:	
Sample Type:	Unknown	Acq. Method Set:	Corilagin
Vial:	1:B,8	Processing Method:	Samples
Injection #:	1	Channel Name:	266.0nm
Injection Volume:	10.00 ul	Proc. Chnl. Descr.:	PDA 266.0 nm
Run Time:	25.0 Minutes		

Auto-Scaled Chromatogram



Peak Results

	Name	RT	Area	% Area	USP Plate Count	USP Resolution
1		11.740	47322	0.39	6562.16	
2		14.750	94182	0.77		3.85
3		15.373	12069411	98.53	66882.03	1.21
4		18.767	2912	0.02	81387.51	14.28
5		21.095	26404	0.22	45241.72	6.19
6		22.720	9467	0.08	12213.14	2.54